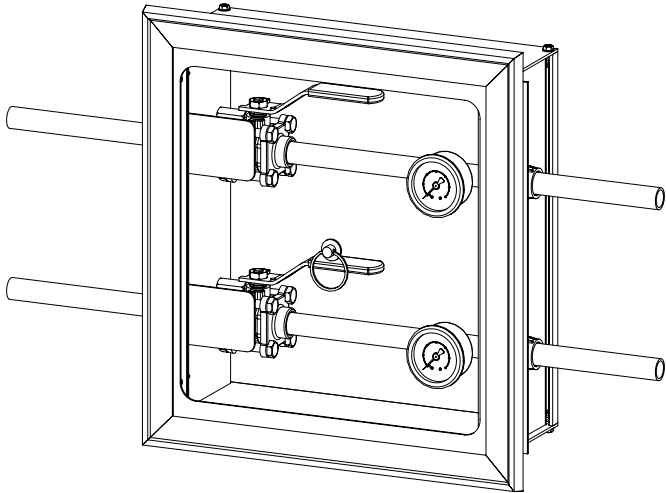


Valve Box Assembly



* Item shown: VBX22GA

Item number definition

VBX-xxxGA

"x"=Ball valve size (refers to by numbers from 1 to 6)

GA=Valve with Gauge

1=1/2"

2=3/4"

3=1"

4=1 1/4"

5=1 1/2"

6=2"

Available Sizes:

1/2" to 2"

Available box types:

Up to 6 valves

Specifications

Each recessed valve box shall be an all aluminium assembly consisting of the following components: a box which can house one to 6 shut-off ball valves with tube extensions, an aluminium frame, and a pull-out removable window.

The valve box shall be constructed of heavy gauge aluminium extrusion with mounting bracket on both sides for the purpose of installing the box to the wall structural members frames.

The window frame assembly shall be constructed of anodized aluminium and shall be mounted to the box assembly by standard number 6-32 screws as provided.

The removable front window shall consist of a clear Lexan with a pull-out ring pre-mounted to the center of the window.

Access to the zone shut-off valves shall be by merely pulling the ring assembly to remove the window from the door frame. The window can be reinstalled without the use of tools only after the valve handles have been returned to the open position.

The window shall be marked with a caution sign to prohibit unauthorized persons from tampering with the valves.

Valves shall be supplied with an identification plate bolted directly to the internal edge of the box for the purpose of applying an approved medical gas identification label. A package of labels shall be supplied with each valve box assembly for application by the installer.

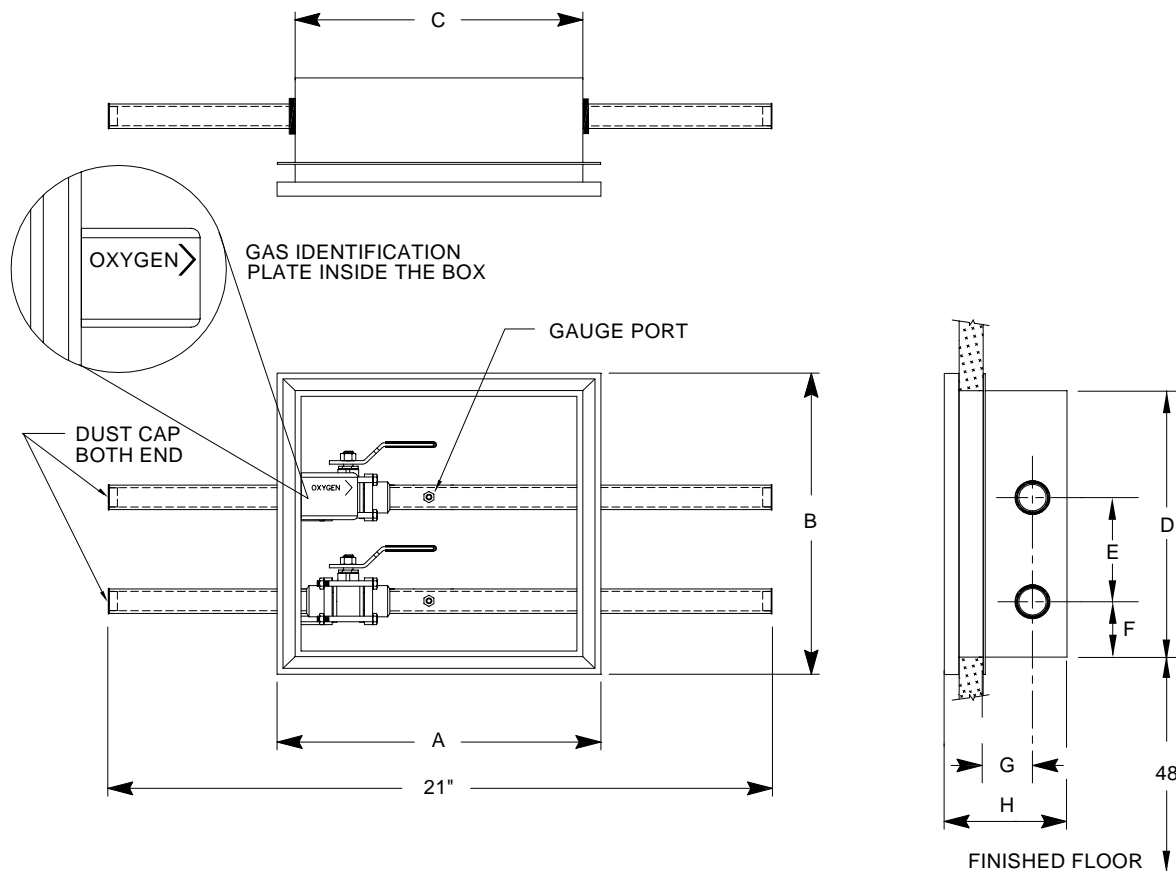
Valves shall be available with or without line pressure monitoring gauges. When supplied the gauge shall be 1 1/2" diameter, with metal case and ring, NPT brass stud at the back of the gauge.

Pressure gauges shall read 0-100 psi [0-700 Kpa] for all gas services except Nitrogen which shall read 0-300 psi [0-2000Kpa]; and Vacuum which shall read 0-30" Hg [0-760 mmHg].

Site Installation

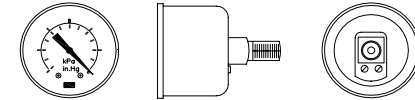
All valves shall be installed in accordance with Medical Design's installation instructions. Each contractor has the responsibility to insure that every valve is subject to a final site inspection in compliance with all National, State and Local Codes.

EEME SERIES - RECESSED MOUNT VALVE BOX



PRESSURE GAUGE

ORDER GAUGES SEPARATLY FOR ZONE VALVE APPLICATION



GAUGES		
P/N	TYPE	SYSTEM
G30	0-30 Hg	VACUUM
G100	0-100 psig	O ₂ -AIR-N ₂ O
G300	0-300 psig	NITROGEN

NOTE: VALVE BOX ASSEMBLIE INCLUDE 1/8-NPT GAUGE PORT/PLUG PROVISION.

IDENTIFICATION

VALVE ID.	GAS ID.	
1/2" = 1	OXYGEN	= O
3/4" = 2	MEDICAL AIR	= A
1" = 3	MEDICAL VACUUM	= V
1 1/4" = 4	NITROGEN	= N
1 1/2" = 5	NITROUS OXIDE	= NO
2" = 6		

VALVE BOX WITH 2", 2 1/2" AND 3" BALL VALVE ARE ON SPECIAL ORDER. DIMENSION TO BE SUPPLY ACCORDINGLY.

VALVE QTY	DIAMETER	A	B	C	D	E	F	G	H
1 or 2	1/2 to 1 1/2"	12.20"	12.83"	10.86"	11.02"	WILL VARY DEPENDING ON VALVE SIZE			4.25"
3	1/2 to 1 1/2"	12.20"	15.23"	10.86"	13.38"				4.25"
4	1/2 to 1 1/2"	12.20"	19.25"	10.86"	17.36"				4.25"
5	1/2 to 1 1/2"	12.20"	27.24"	10.86"	25.35"				4.25"

SPECIFICATION NUMBERS

