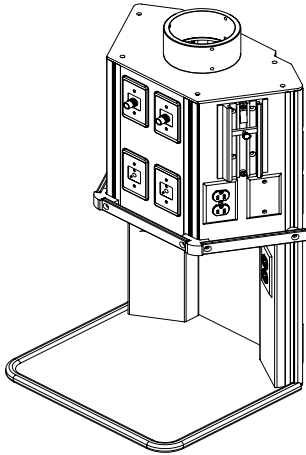
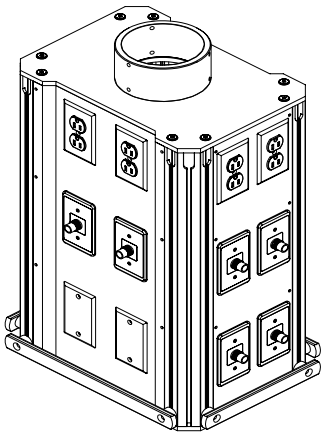


Proxima Series Service Manager



Shown unit: Proxima Series Service Manager D shape with bottom shelf – Height is 430mm



Shown unit: Proxima Series Service Manager rectangular – Height is 635mm

Item number definition

PSM-XXX-R/D-S - "XXX"=Height in inches

R= Rectangular

D= D Shape

S= Slim

Available Heights (in mm):

230, 430, 635, 840, 1040

Construction Specification

This Service Manager unit shall be constructed of .094" thick 6063-t 5 alloy, extruded aluminium for the structural frame members. All exposed aluminium surface shall be clear anodized. Each side corner shall be equipped with Medical Design's track system as an integral part of the frame member, both designed to manage horizontally and vertically hospital equipment and accessories. Side panel shall be made of light almond powder coated aluminium sheet and shall be pre-punched with openings to accept medical gas outlets, electrical and communication devices. All panels shall be easily removable by means of mounting stainless steel screws located on each side. This product is cULus listed.

Medical Gas

Medical gas outlets shall be supplied, installed and manifolded by Medical Design. Flexible hoses shall pass through the articulated arm to connect the medical gas outlet to the Hospital system. Connection points for flexible hoses are located above the arm mounting plate. Installation and testing shall comply with National Fire Protection Association (NFPA 99c) & C.R.N. (BNQ 5710-500, CSA Z305.1 / B51-95).

Electrical Equipment

Electrical devices shall be supplied and pre-wired by Medical Design. Wiring shall run through a metal raceway and terminate at either end for a single connection point to the Hospital electrical system. Conductors shall be No 12 stranded RW-90 copper wire for normal and emergency power circuits. All devices shall be grounded with #10 AWG green jacket stranded copper wire. All electrical receptacles shall be NEMA 5-15/20R, 125volts AC, hospital grade and comply with CSA and are cULus listed. Receptacles shall be red for emergency and ivory for normal power.

Communication

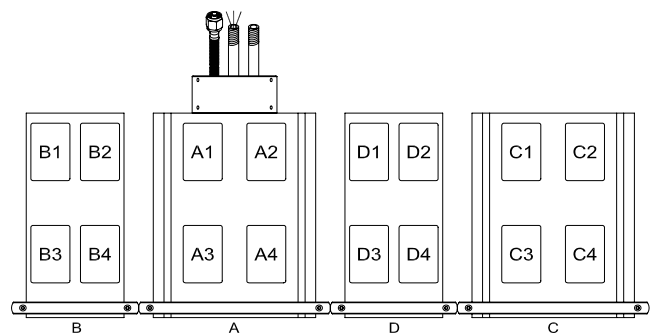
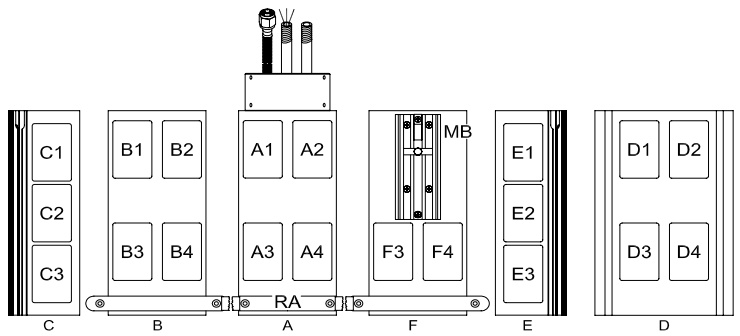
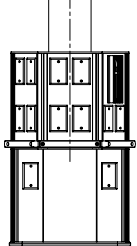
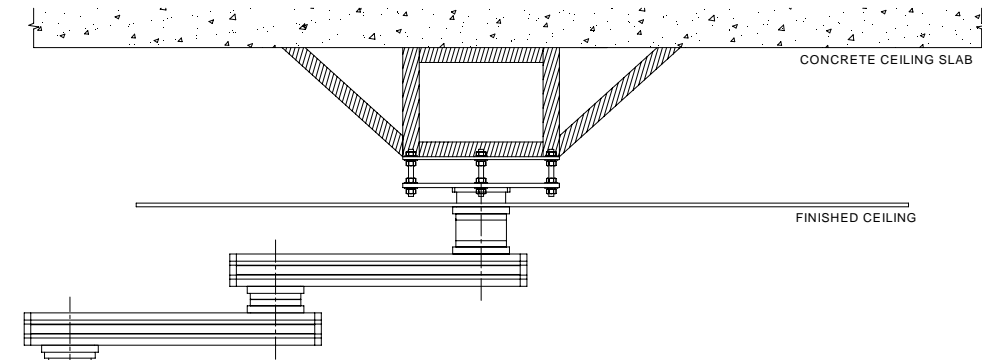
Communication devices shall be supplied and installed by others. Provisions for devices shall be coordinated with Medical Design.

Site Installation

All units shall be installed in accordance with Medical Design's installation instructions. The mechanical and electrical contractor shall provide the final connection to the Hospital System. The contractor has the responsibility to insure that every unit is subject to a final site inspection in compliance with all National, State and Local Codes.

Typical Shop Drawing

PROXIMA SERIES - SERVICE MANAGER - RECTANGULAR / "D" SHAPE



MODEL	HEIGHT	
PSM 230	9"	229 mm
PSM 430	17"	432 mm
PSM 635	25"	635 mm
PSM 840	33"	838 mm
PSM 1040	41"	1041 mm

LEGEND		
MEDICAL GAS		
ID	QTY	DESCRIPTION
O ₂	-	OXYGEN OUTLET Q.C. <input type="checkbox"/> OU D.I.S.S. <input type="checkbox"/>
A	-	MEDICAL AIR OUTLET Q.C. <input type="checkbox"/> OU D.I.S.S. <input type="checkbox"/>
V	-	VACUUM INLET Q.C. <input type="checkbox"/> OU D.I.S.S. <input type="checkbox"/>
N ₂	-	NITROGEN OUTLET D.I.S.S. ONLY <input type="checkbox"/>
N ₂ O	-	NITROUS OXIDE OUTLET Q.C. <input type="checkbox"/> OU D.I.S.S. <input type="checkbox"/>
EVAC	-	EVAC OUTLET Q.C. <input type="checkbox"/> OU D.I.S.S. <input type="checkbox"/>
CO ₂	-	CARBON DIOXIDE OUTLET D.I.S.S. ONLY <input type="checkbox"/>
ELECTRICITE ET COMMUNICATION		
DR	-	DUPLEX RECEPTACLE, 15A, 125V, H.G., (RED) EMERGENCY POWER
DW	-	DUPLEX RECEPTACLE, 20A, 125V, H.G., (WHITE) NORMAL POWER
DP	-	DATA PROVISION
B	-	BLANK PLATE
ACCESSOIRES		
RA	1	RAIL SYSTEM FOR ACCESSORIES
SH	1	SHELF (18" X 15")
MB	1	MONITOR BRACKET SUPPORT
OTHER SERVICES AND ACCESSORIES ARE AVAILABLE. CONTACT US FOR MORE INFORMATION.		

