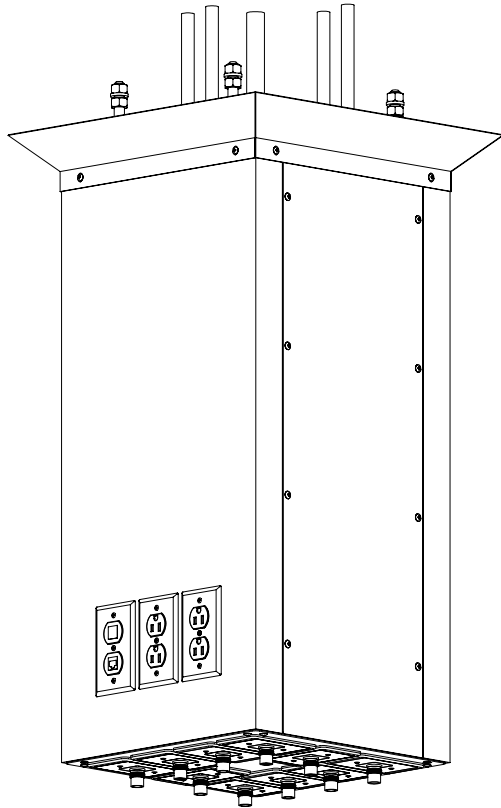


Ultimate Series Fixed Ceiling Column



Item number definition

CCU-XX00-Y

"XX"= Height in inches

Y= Finish Type (Paint or Stainless Steel)

Construction Specification

The Fixed Ceiling Column shall consist of a single stainless steel shroud forming a 13.5"x13.5" square column, and a stainless steel ceiling collar. The column shall be constructed of 16 gauge stainless steel with a number 4 finish. Included within the column design shall be a removable service access panel, a stainless steel ceiling collar, and a heavy gauge steel mounting plate. A light almond, powder coated finish model is also available.

The mounting plate shall be furnished complete with four 0.50" threaded rods for installation to an owner supplied ceiling mounting structure. This product is cULus listed.

Medical Gas

Medical gas outlets shall be furnished pre-installed within the bottom faceplate. Connections of all medical gas outlets are hard piped throughout the length of the column and terminated with copper tubing located 6" above the mounting plate. All components shall comply with National Fire Protection Association (NFPA 99c) & CRN (BNQ 5710-500, CSA Z305.1/B51-95).

Electrical Equipment

Electrical devices shall be furnished pre-installed on bottom of the column shroud (devices oriented vertically facing outward) of the column, and terminated within the column in a junction box located below the ceiling level. Wiring between devices and junction box shall be run in flexible aluminium conduit or cabling. The junction box shall be accessible through the access panel. All electrical receptacles are NEMA 5-15/20R, 125volts AC, hospital grade, comply with CSA and are cULus listed. Emergency receptacles shall be red in color and ivory for normal receptacle.

Communication

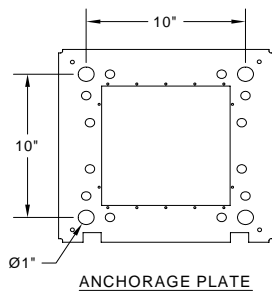
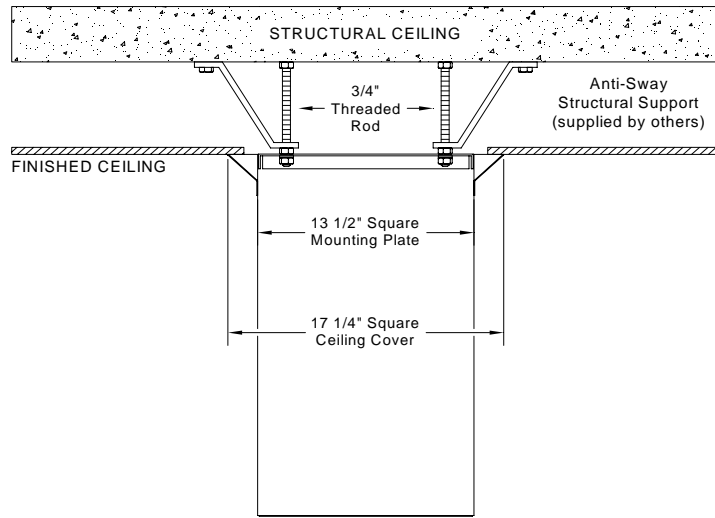
Communication devices shall be supplied and installed by others. Provisions for devices shall be coordinated with Medical Design.

Site Installation

All units shall be installed in accordance with Medical Design's installation instructions. The mechanical and electrical contractor shall provide the final connection to the Hospital System. The contractor has the responsibility to insure that every unit is subject to a final site inspection in compliance with all National, State and Local Codes.

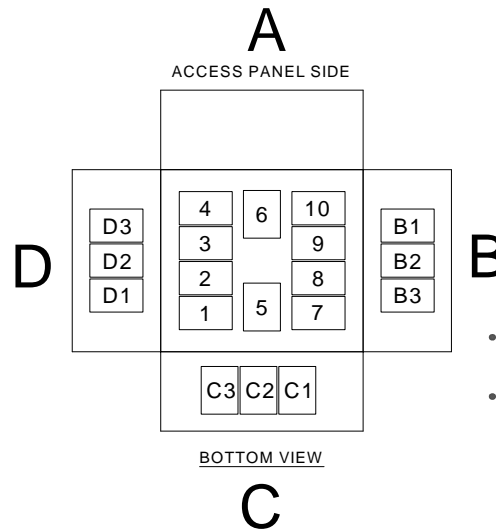
Typical Shop Drawing

ULTIMATE SERIES CEILING COLUMN - FIXED



TYPE: FIXED (Ultimate)

LEGEND		
MEDICAL GAS		
ID	QTY	DESCRIPTION
O ₂	-	OXYGEN OUTLET ; Q.C. <input type="checkbox"/> OR D.I.S.S. <input type="checkbox"/>
A	-	MEDICAL AIR OUTLET ; Q.C. <input type="checkbox"/> OR D.I.S.S. <input type="checkbox"/>
V	-	VACUUM OUTLET ; Q.C. <input type="checkbox"/> OR D.I.S.S. <input type="checkbox"/>
N ₂	-	NITROGEN OUTLET ; D.I.S.S. <input type="checkbox"/>
N ₂ O	-	NITROUS OXIDE OUTLET ; Q.C. <input type="checkbox"/> OR D.I.S.S. <input type="checkbox"/>
EVAC	-	EVACUATION OUTLET ; Q.C. <input type="checkbox"/> OR D.I.S.S. <input type="checkbox"/>
CO ₂	-	CARBON DIOXIDE OUTLET ; D.I.S.S. <input type="checkbox"/>
ELECTRICITY AND COMMUNICATION		
DR	-	DUPLEX RECEPTACLE, 20A, 125V, H.G., (RED) EMERGENCY POWER (HBL8300HR) - EEME BACKBOX
DI	-	DUPLEX RECEPTACLE, 20A, 125V, H.G., (IVORY) EMERGENCY POWER (HBL800HR) - EEME BACKBOX
JB	-	JUNCTION BOX, 4 GANGS, GW-435-G
B	-	BLANK FRONT PLATE



- POSITIONS 1 TO 10 NORMALLY USED FOR MEDICAL GAS OUTLETS
- POSITIONS B1 TO D3 NORMALLY USED FOR ELECTRICAL & COMMUNICATION DEVICES